



Marine Diesel Engine D87

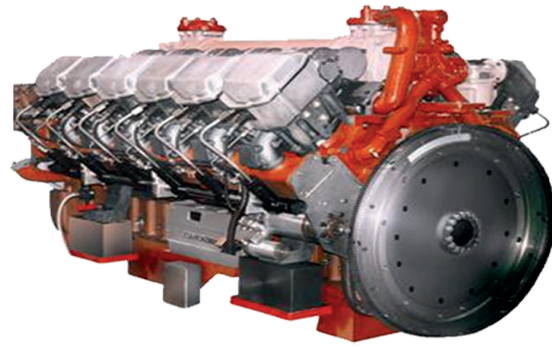


DESCRIPTION

The D87 family has the ability to consume dual fuel and this type of engine can be utilized in rail way, power plants and marine applications.

Product Specifications:

- Using ladder frame
- Common rail fuel system (min 1600 bar)
- Lubrication system with oil feed, oil cooler and filter.
- More than 25000 hours TBO base on 1B cylinder.



SPECIFICATIONS

Indicator	20 V	16 V	12 V	8 V	6Linear	Unit
Cylinder Diameter	150	150	150	150	150	mm
Stroke	180	180	180	180	180	mm
Displacement Volume	63/6	50/9	38/2	35/45	19/09	Liters
Engine Length	3996	3084	2290	1860	2150	mm
Engine Width	1420	1420	1290	1290	930	mm
Engine Height	1548	1419	1290	1290	1210	mm
Engine Weight	6000	4800	3700	3100	2600	Kg
V Angle	90	90	90	90	—	Degree
Power (Kw)	1830	1330	1000	650	550	Diesel
	—	—	850	—	—	2Times
	1500	1200	850	—	—	Gas

Marine Combined Gearbox CODAD

DESCRIPTION

The gearbox is used to work with two marine diesel engines with the power of 4250 hp and speed of 1050 rpm with two inlets and one output axis, equipped with pneumatic clutch. It has mechanical oil pump, oil cooler and other design requirement. The manufacture of this gearbox is done in IRAN.



SPECIFICATIONS

TYPE	MARINE COMBINED GEARBOX CODAD
Dimesnion(L×W×H)	2010 × 2460 × 1750 mm
Horizontal Distance Between Two Input Shafts	1772 mm
Vertical Distance Between Input and Output Shaft	0 mm
Clutch Pressure Performance	5/8-7 MPA
Oil Lub Pressure	04/ -0 4/0 MPA
Weight	18000 (Kg)